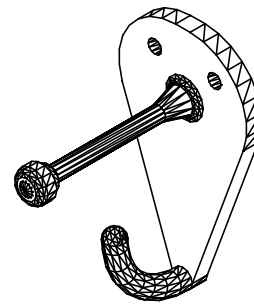
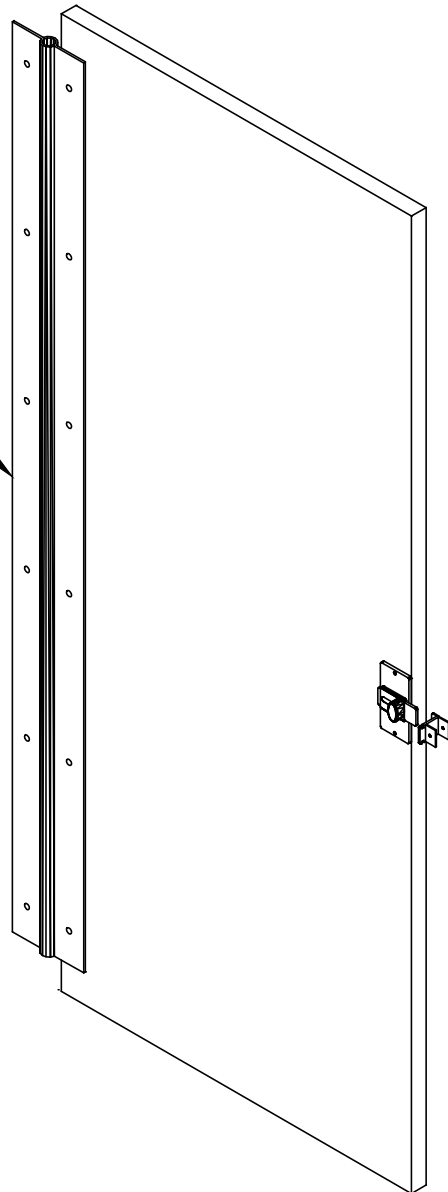
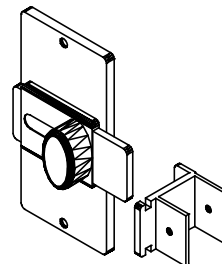


PHENOLIC
CONTINUOUS HINGE
COMPARTMENT DOOR DETAIL
6.16F

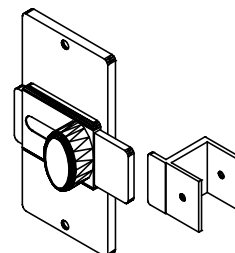
54" CONTINUOUS HINGE
CENTERED ON DOOR



COMBINATION
COAT HOOK / DOOR
STOP



SLIDE LATCH
WITH LOCK
(INSWING)



SLIDE LATCH
WITH LOCK
(OUTSWING)

REV 5/13